

BLACKSPUR OIL CORP. N83

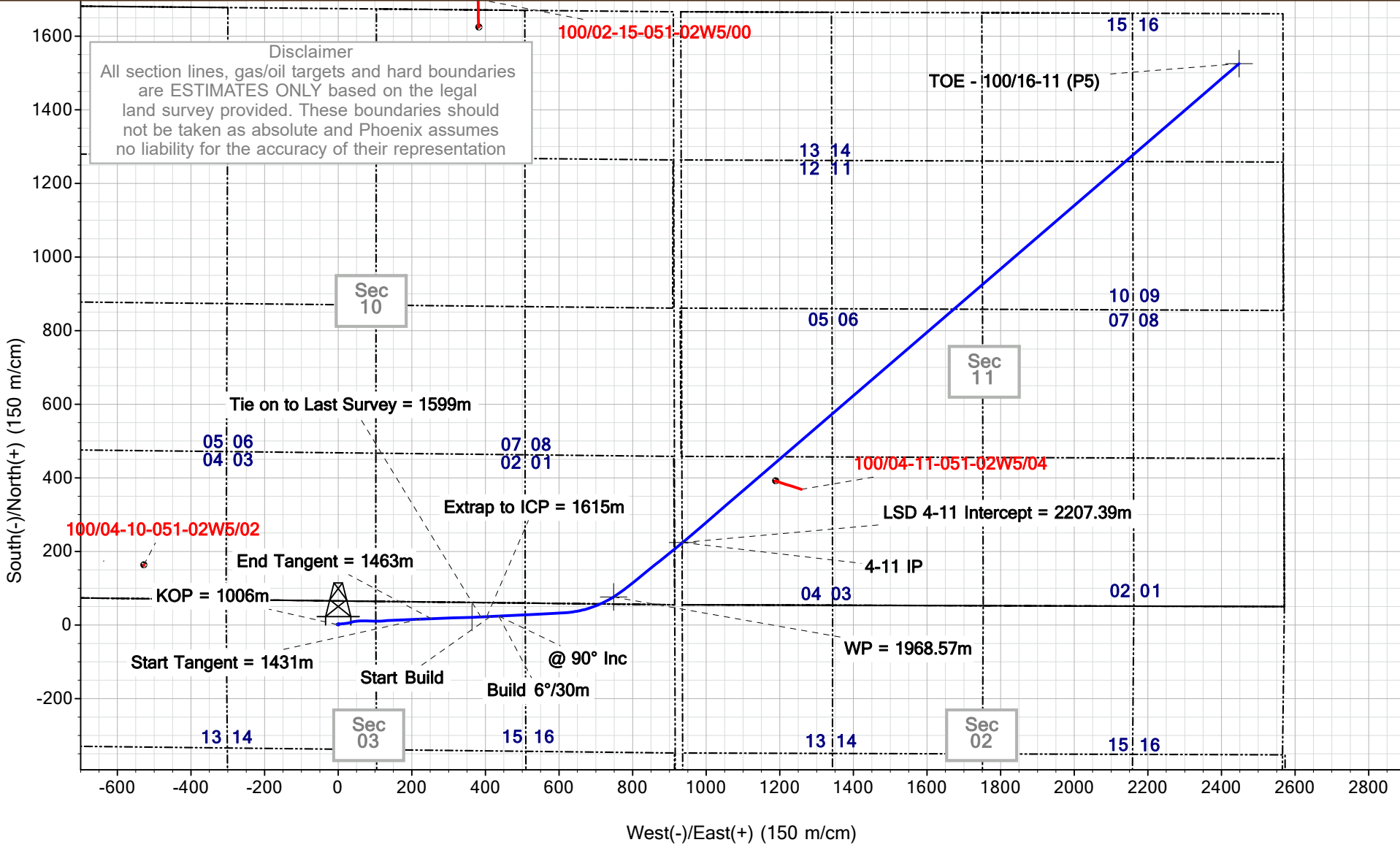
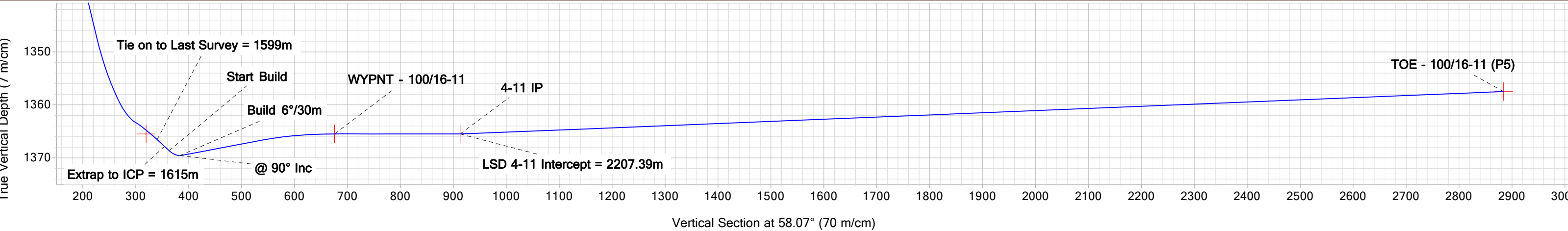
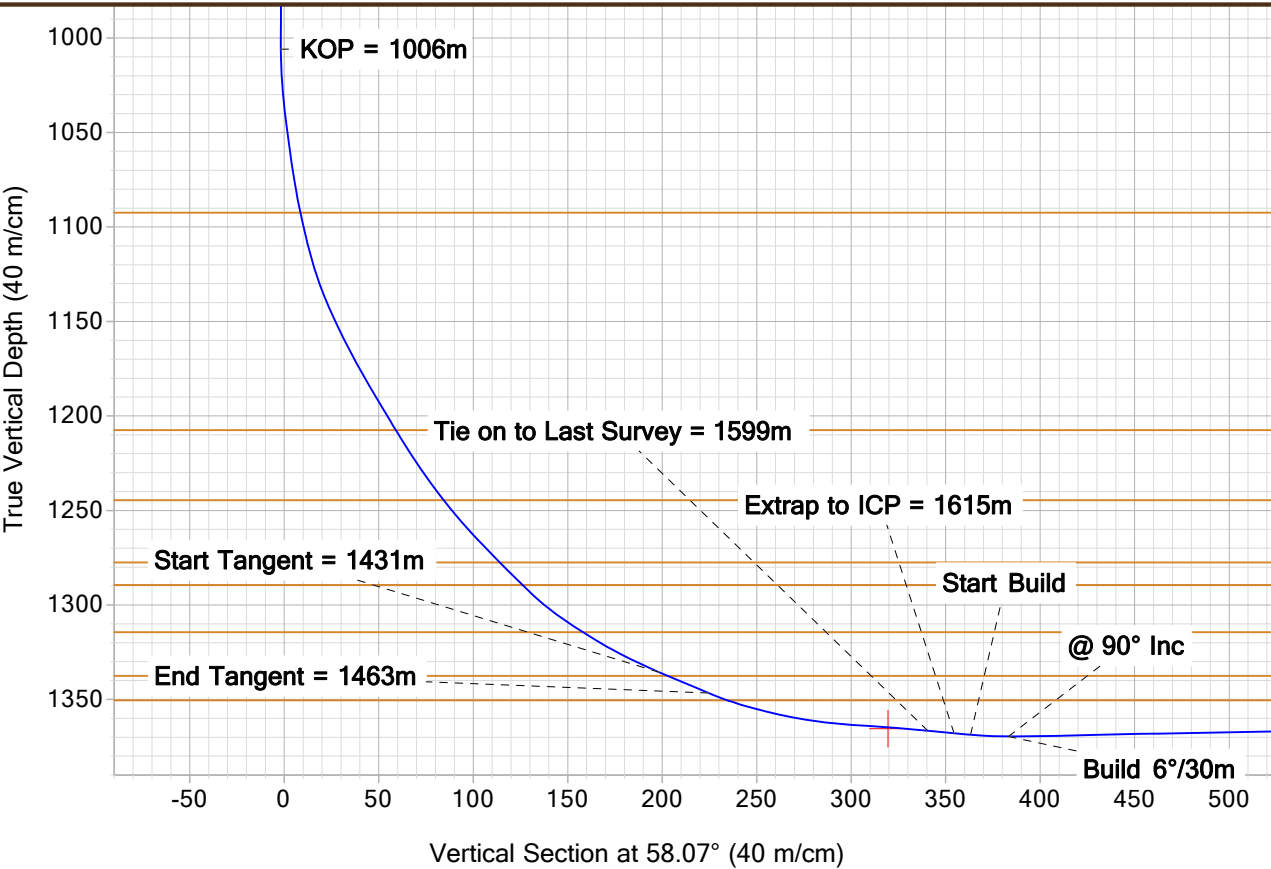
Project: Leduc-WB (NAD 83-Z11)
Site: 14-03-051-02W5
Well: BLACKSPUR HZ LEDUC-WB 16-11-51-2
Wellbore: 100/16-11-051-02W5/00
Design: 28333 P5
Well License #:



Ground Level (m): 742.01
Actual KB @ 747.51m (Horizon 43

SECTION DETAILS

MD	Inc	Azi	TVD	+N/-S	+E/-W	Dleg	TFace	VSect	Annotation
1599.00	85.40	87.20	1366.59	21.93	387.53	0.000	0.00	340.50	Tie on to Last Survey = 1599m
1615.00	85.40	87.20	1367.87	22.70	403.46	0.000	0.00	354.43	Extrap to ICP = 1615m
1625.00	85.40	87.20	1368.67	23.19	413.42	0.000	0.00	363.14	Start Build
1648.00	90.00	87.20	1369.60	24.31	436.37	6.000	0.00	383.21	@ 90° Inc
1652.75	90.95	87.20	1369.56	24.55	441.11	6.000	-0.11	387.36	
1821.51	90.95	87.20	1366.76	32.79	609.65	0.000	0.00	534.76	
1968.57	90.00	57.80	1365.51	76.54	748.36	6.000	-91.69	675.62	WP = 1968.57m
2018.73	90.00	51.11	1365.51	105.68	789.15	4.000	-90.00	725.65	
2207.39	90.00	51.11	1365.51	224.12	936.00	0.000	0.00	912.92	LSD 4-11 Intercept = 2207.39m
2221.27	90.23	49.28	1365.48	233.00	946.66	4.000	-82.84	926.67	
4202.21	90.23	49.28	1357.51	1525.37	2447.93	0.000	0.00	2884.29	TD = 4202.21m



SURFACE LOCATION					LOCAL COORDINATES	
Datum: North American Datum 1983					Surface Co-ordinates	
Zone: Zone 11N (120 W to 114 W)					65m S of N Boundary	
Northing: 5918259.20					711.4m E of W Boundary, Sec 3	
Easting: 685392.50					TD Co-ordinates	
Latitude: 53° 22' 51.065 N					135m S of N Boundary	
Longitude: 114° 12' 45.341 W					120.0m W of E Boundary, Sec 11	
DESIGN TARGET DETAILS						
Name	+N/-S	+E/-W	Northing	Easting		
TOE - 100/16-11 (P5)	1525.37	2447.93	5919879.00	687779.00		
4-11 IP	224.12	936.00	5918519.70	686319.03		
HEEL - 100/16-11	20.93	363.39	5918294.30	685754.80		

